

In Festo Sanctissimi Corporis Christi

Introitus: Cibavit eos

C ^{II}

I-bá- vit e- os ex á-di- pe frumén- ti, ál-le-
lú- ia: et de pe- tra, mel-le sa-tu- rá- vit e- os, al-le-
lú- ia, al- le- lú- ia, al- le- lú- ia. *Ps.* Exsul-
tá- te De- o ad- iu- tó- ri nostro: * iu- bi- lá- te De- o Ia- cob.
Gló- ri- a Pa- tri, et Fí- li- o, et Spi- rí- tu- i Sán- cto. * Sic- ut é- rat
in princí- pi- o, et nunc, et semper, et in sæcu- la sæ- cu- ló- rum.
A- men.

The image shows a musical score for the Introitus 'Cibavit eos'. It consists of seven staves of music. The first staff begins with a large 'C' and a 'II' above it. The lyrics are written below the notes. The music is in a simple, rhythmic style with a mix of quarter and eighth notes. The lyrics are: 'I-bá- vit e- os ex á-di- pe frumén- ti, ál-le- lú- ia: et de pe- tra, mel-le sa-tu- rá- vit e- os, al-le- lú- ia, al- le- lú- ia, al- le- lú- ia. Ps. Exsul- tá- te De- o ad- iu- tó- ri nostro: * iu- bi- lá- te De- o Ia- cob. Gló- ri- a Pa- tri, et Fí- li- o, et Spi- rí- tu- i Sán- cto. * Sic- ut é- rat in princí- pi- o, et nunc, et semper, et in sæcu- la sæ- cu- ló- rum. A- men.'

Graduale: Oculi omnium

VII

O - cu - li ó - mni - um in te spe - rant,

Dómi - ne: et tu das il - lis

e - scam in témpo - re oppor -

tú - no Ψ . †* A-pe-

ris tu ma - num

tu - am: et imples omne

á - ni - mal †* bē - ne - di - cti - ó - ne.

Graduale: Oculi omnium (Versus in Psalmodia)

+* A- pe- ris tu ma- num tu- am: * et imples omne á-ni-
mal †*

Graduale: Oculi omnium (Psalmodia)

VII
O - cu- li ómni- um in te spe- rant, Dó-mi- ne: * et tu das
il- lis escam in témpo- re oportú- no. A- pe- ris tu ma- num
tu- am: * et imples omne á-nimal be- ne- di- cti- ó- ne.

Alleluia: Caro mea

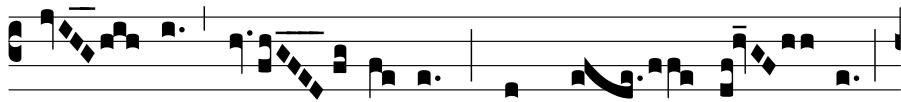
VII
A L- le- lú- ia. * ij.
ψ. Ca- ro me- a ve- re est ci- bus, et san-



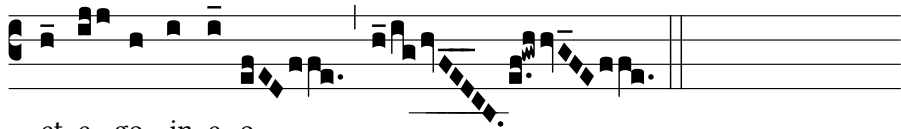
guis me- us ve-re est po- tus: qui mandú-



cat me- am carnem, et bi- bit me-

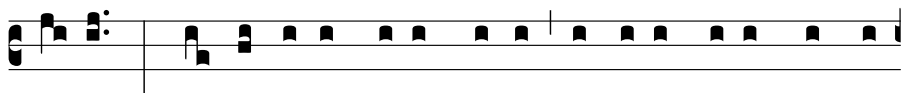
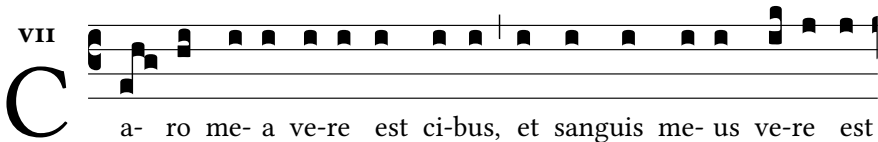


um sán- gui- nem, * in me ma- net,

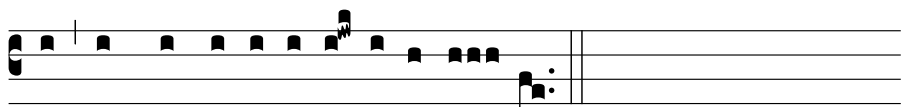


et e- go in e- o.

Alleluia: Caro mea (Versus in Psalmodia)



po- tus: * qui mandú-cat me- am carnem, et bi-bit me- um sánqui-



nem, in me ma-net et e- go in e- o.

Alleluia: Caro mes (Modus simplex cum Psalmodia)

VIII

A L- le- lú- ia. * ij. Ca- ro

me- a ve-re est ci-bus et sanguis me- us ve- re est po-tus: *

qui mandú-cat me- am carnem, et bi-bit me- um sán-gui-nem, in me

ma-net et e- go in e- o.

Sequentia: Lauda Sion

VII

L Auda Si- on Salva-tó-rem, Lauda du-cem et pastó-rem, In hym-

nis et cánti-cis. 2. Quantum po-tes, tantum aude: Qui- a ma-ior o-

mni laude, Nec laudá-re súb-fi-cis. 3. Laudis thema spe-ci- á- lis,

Pa-nis vi-vus et vi-tá-lis Hó-di- e pro-pó-ni-tur. 4. Quem in sacrae

mensa coe- nae, Turbae fratrum du- o- dénae Da- tum non ambí-

gi- tur. 5. Sit laus ple- na, sit so- nó- ra, Sit iu- cún- da, sit de- có- ra
Mentis iu- bi- lá- ti- o. 6. Di- es e- nim sol- ém- nis á- gi- tur, In qua men-

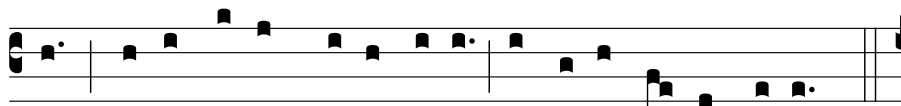
sae pri- ma re- có- li- tur Hu- ius insti- tú- ti- o. 7. In hac mensa no- vi

Re- gis, No- vum Pascha novae le- gis, Pha- se ve- tus térmi- nat. 8. Ve-
tus- tá- tem nó- vi- tas, Umbram fu- gat vé- ri- tas, Noctem lux e- lí- mi-

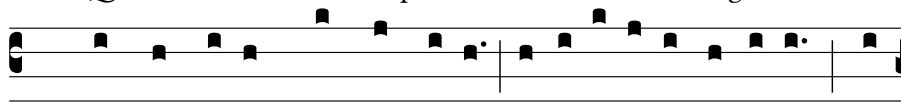
nat. 9. Quod in coena Chri- stus gessit, Fa- ci- éndum hoc exprés- sit

In su- i memó- ri- am. 10. Docti sacris insti- tú- tis, Pa- nem, vi- num

in sa- lú- tis Consecrá- mus hó- sti- am. 11. Dogma da- tur chri- sti- á-



nis, Quod in carnem transit pa-nis, Et vi-num in sán-gui-nem.



12. Quod non ca-pis, quod non vi-des, A-nimó-sa firmat fi-des, Prae-



ter re-rum ór-di-nem. 13. Sub di-vér-sis spe-ci- é-bus, Signis tantum,



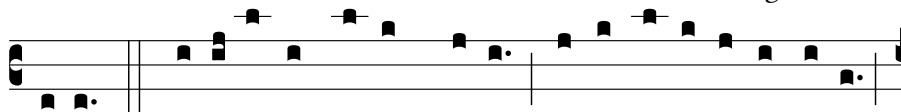
et non re-bus, La-tent res ex-í-mi-ae. 14. Ca-ro ci-bus, sanguis po-



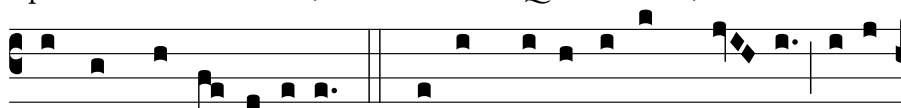
tus: Ma-net tamen Chri-stus to-tus Sub utrá-que spé-ci- e. 15. A su-



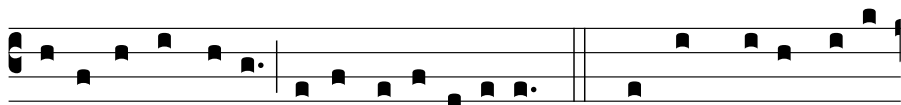
mén-te non concí-sus, Non confrá-ctus, non di-ví-sus: Inte-ger ac-cí-



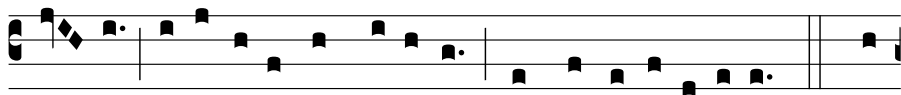
pi-tur. 16. Sumit u-nus, sumunt mil-le: Quantum is-ti, tantum il-le:



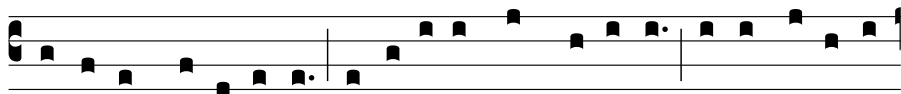
Nec sumptus consú-mi-tur. 17. Sumunt bo-ni, sumunt ma- li: Sorte



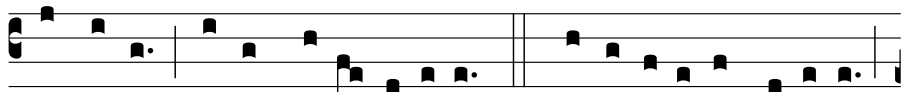
tamen in-aequá-li, Vi-tae vel inté-ri-tus. 18. Mors est ma-lis, vi-ta



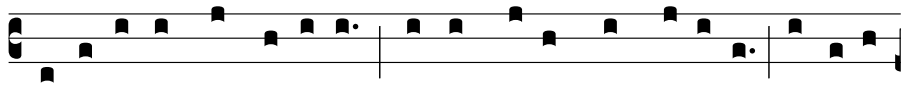
bo-nis: Vi-de pa-ris sumpti- ó-nis Quam sit dispar éx-i-tus. 19. Fra-



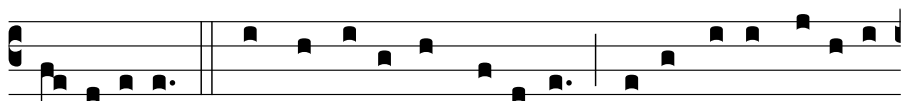
cto demum sacraméto, Ne va-cí-les, sed meméto Tantum esse sub



fragméto, Quantum to-to té-gi-tur. 20. Nul-la re- i fit scissú-ra:



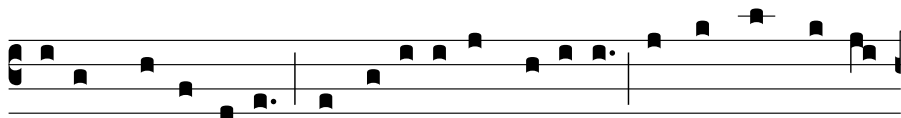
Signi tantum fit fractú-ra, Qua nec sta-tus, nec sta-tú-ra Signá-ti



mi-nú- i-tur. 21. ECCE PANIS ANGELÓRUM, Factus ci-bus vi- a-tó-



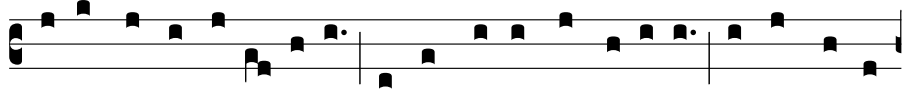
rum: Ve-re pa-nis fi- li- ó-rum, Non mit-téndus cá-ni-bus. 22. In fi-



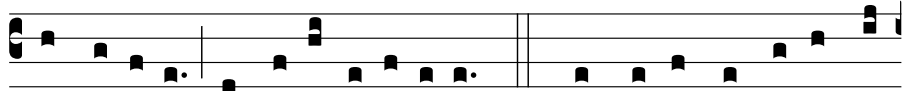
gú-ris prae-signá-tur, Cum I-sa- ac immo-lá-tur, Agnus Paschae de-



pu-tá-tur, Da-tur manna pá-tri-bus. 23. Bo-ne pastor, pa-nis ve-re,



le-su, nostri mi-se-ré-re: Tu nos pasce, nos tu-é-re, Tu nos bo-na



fac vi-dé-re In terra vi-vénti-um. 24. Tu qui cuncta scis et va-



les, Qui nos pascis hic mor-tá-les: Tu- os i-bi commensá-les, Co-he-

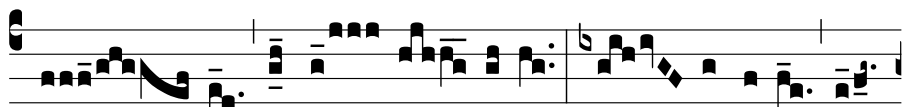


ré-des et so-dá-les Fac sanctó-rum cí-vi-um. A- men. Al-le-lú-ia.

Offertorium: Sacerdotes Domini



A- cer- dó- tes Dó- mi- ni incén- sum et



pa- nes óf-fe- runt De- o: et íd- e- o san-



cti e- runt De- o su- o, et non pól-

lu- ent nō- men e- ius, al- le- lú-ia.

Offertorium: Sacerdotes Domini (Psalmodia)

IV

S a- cerdó-tes Dómi-ni incénsum et pa-nes óf-fe-runt De- o:

* et í-de- o sancti e-runt De- o su- o: et non pól-lu- ent nomen

e-ius, al- le-lú-ia.

Communio: Quotiescumque

VII

Q Uo-ti- escúmque mandu-cá- bi- tis pa-nem hunc, et cá-

li-cem bi-bé- tis, mor-tem Dó- mi-ni annunti- á-bi- tis, do- nec

vé- ni- at: í-taque qui- cúmque mandu-cá- ve-rit pa-nem, vel

bí-be-rit cá-li-cem Dómi-ni in-dí- gne re- us e- rit córpo- ris

et sánqui-nis Dó-mi-ni, al-le-lú-ia. Ps. Dó-mi-nus re-

git me, et ni-hil mi-hi dé-e-rit: * in lo-co páscu-ae, i-bi me

col-lo-cá-vit. Su-per aquam re-fec-ti-ónis e-du-ca-vit me: *

á-nimam me-am convér-tit. Gló-ri-a Pa-tri, et Fí-li-o,

et Spi-rí-tu-i Sancto. * Sic-ut e-rat in princí-pi-o, et nunc, et

semper, et in saécu-la saecu-ló-rum. A-men.